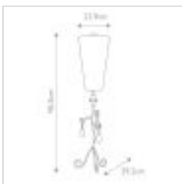
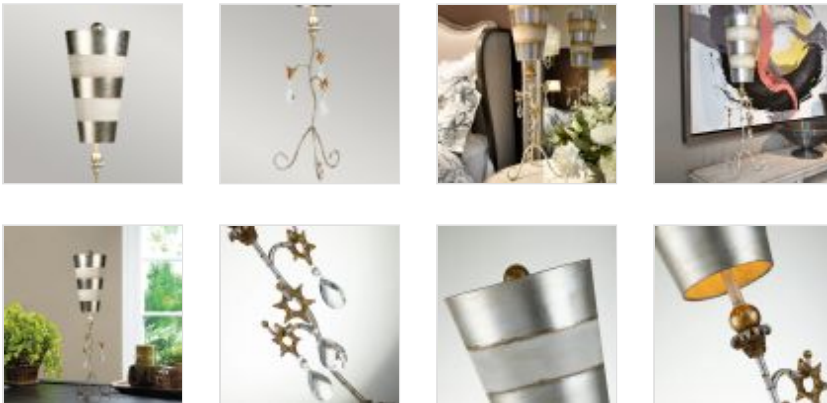


30089

1 Light Table Lamp - Silver & Cream Patina

DETAILS	
FAMILY	Tivoli
SUITABLE LOCATION	Interior
GUARANTEE	General 2 Year Guarantee
FINISH	Silver & Cream Patina
FITTING HEIGHT	965mm
WIDTH	229mm
PROJECTION/DEPTH	292mm
POWER SOURCE	Plug
VOLTAGE	220-240v 50hz
MAXIMUM WATTAGE	60W
NUMBER OF LAMPS	1
SOCKET	E27
INTEGRATED LED	No
CLASS	Class I
BUILD MATERIALS	Steel
DIMMABLE FITTING	Compatible With Dimmable Smart Lamps
PRODUCT WEIGHT	3.06kg
BOX DIMENSIONS	94 X 39 X 35.5cm
BOX WEIGHT	3.40 Kg



PRODUCT DETAILS

1 Lt Table Lamp with a Silver & Cream Patina finish. Main build materials: Steel.

 Distinctive Lighting

Distinctive Lighting

Distinctive Lighting
Elstead House
Mill Lane
Alton, GU34 2QJ,
United Kingdom

Phone

0330 094 8824

Email

enquiries@distinctivelightinguk.com